



3M™ Wireless Communication System Model XT-1
Software Update Tool Set

Operating Instructions

Introduction

The 3M™ Wireless Communication System Model XT-1 software loading program is intended to simplify updating the 3M™ Wireless Communication System Model XT-1 platform. The entire programming process can take from 5 – 20 minutes to complete per base and 5 minutes per headset. The total installation time depends on the number of items to be updated.

Setup

After following the installation instructions for “softupts”, copy the 3M™ Wireless Communication System Model XT-1 Load Files to your PC (either from CD or email). A recommended location is “*c:\3M\data*”

Operation Steps

1. Plug the USB serial cable into the PC USB port.
2. Determine the Com Port number for the USB cable (only necessary the first time):
 - a. Open the **Control Panel**.
 - b. Open the **System** icon.
 - c. Select the **Hardware** tab.
 - d. Select the **Device Manager**.
 - e. Scroll down to **Ports (Com and LPT)** and expand by double clicking.

Record the USB Serial Com Port number (*see Fig 1 – Com 6*).

Note: If the USB Cable COM Port is assigned a number Greater than 9, you are required to:

- Select “Properties” on the Com Port
- Port Settings Tab
- Click the Advanced button.
- Chose a COM port number between 2 and 9 (Some might say “in use” but are just assigned by the system temporarily and available for use).

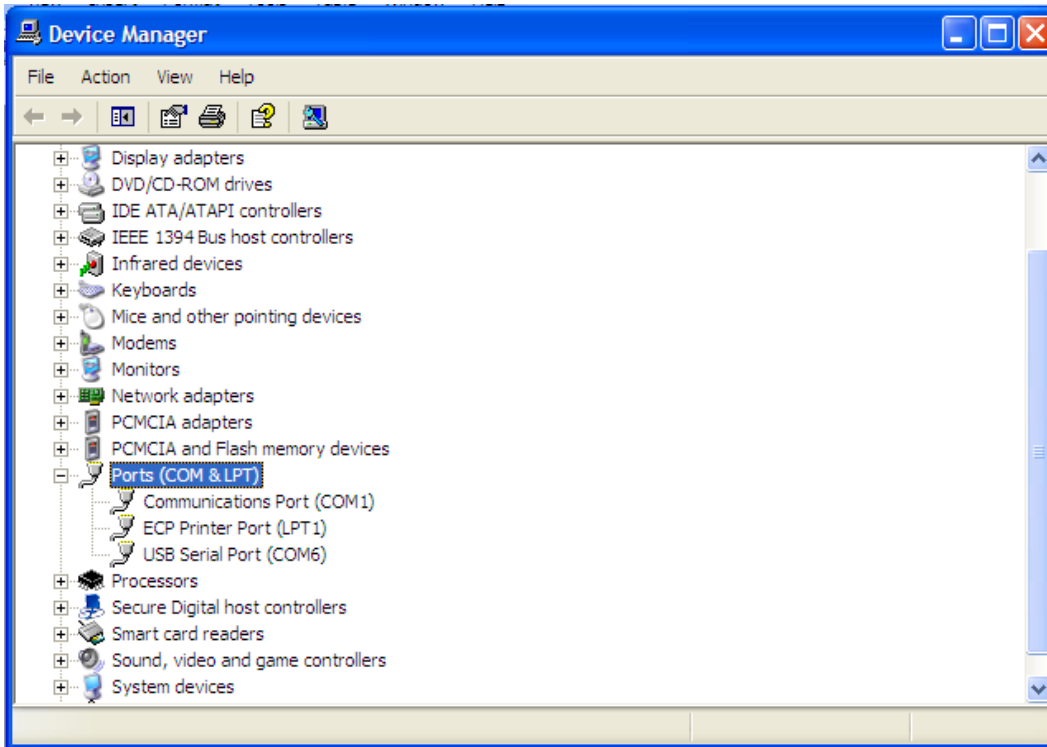


Fig.1 – Device Manager Listing

3. Start the **3M™ Software Update Tool Set for Model XT-1** program using the shortcut on your desktop.

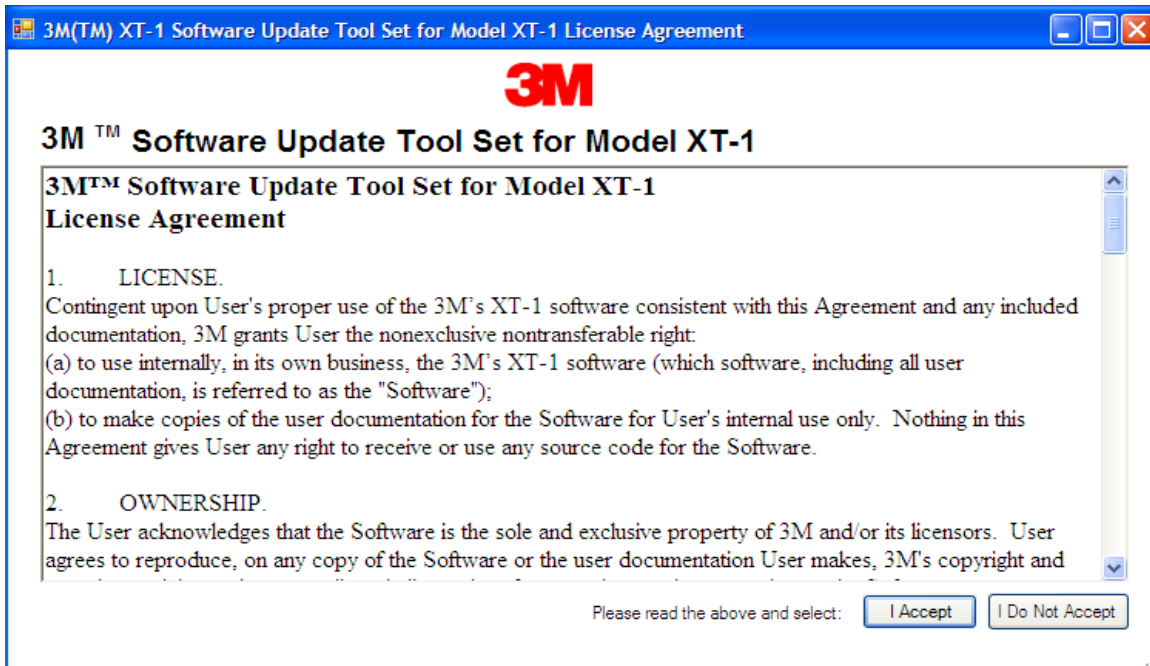


Fig.2 – License Agreement

4. A license agreement will appear the first time the program is opened. Read the agreement and click on “I Accept” to continue (*see Fig 2*).

Note: The “*xt files*” have an expiration date. If you should encounter an error during start up or opening a file, contact 3M customer service with the error number. (*see Fig 3*).

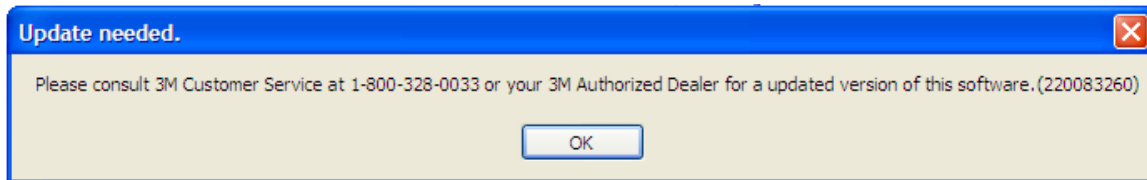


Fig.3 – Software Expiration Error

5. Select File => Open and browse to the desired XT Load File.
6. Select the **USB Serial Com Port** (default should be the last port used).
7. The information on the XT Load File will be displayed along with instructions.

Base Stations

1. Remove cover from the Base Station.
2. Plug the USB cable 6-pin connector into the base station connector labeled CON18, ensuring the **black** wire of the cable connector is toward the **bottom** of the Base Station (Green wire up).



3. Turn off power to the 3M™ Wireless Communication System Model XT-1 Base Station.
4. Engage the programming pin, located just below the right hand antenna, labeled as CON30 (*See Fig. 4.2*).

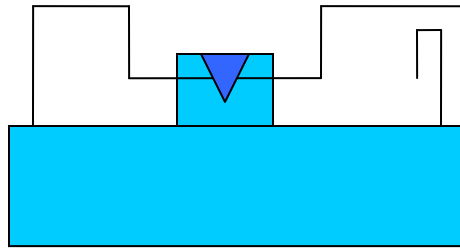


Fig. 4.1 – Programming Pin (CON30) Unfastened

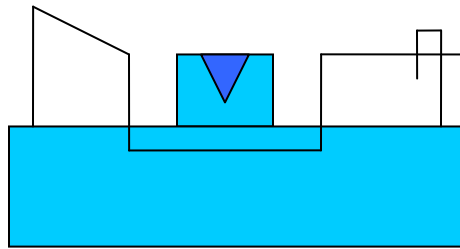


Fig. 4.2 – Programming Pin (CON30) Engaged

5. Turn on power to the 3M™ Wireless Communication System Model XT-1 Base Station
6. Select the **Download** button on the **Softupts** window. (*see Fig 5*).

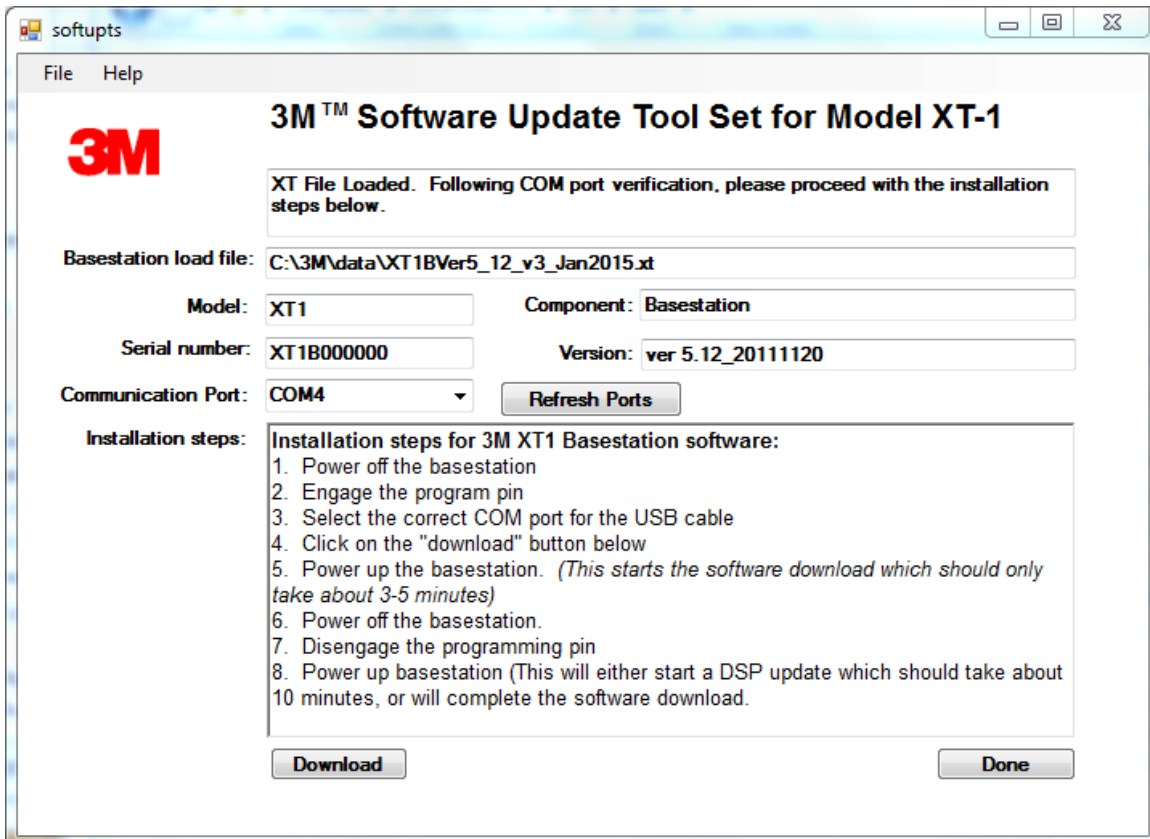


Fig. 5 – Softupts Main Screen

7. Wait for the download application to complete. The temporary DOS window will close and the front panel display of the 3M™ Wireless Communication System Model XT-1 Base Station will give the indication:

<p>FLASH MEMORY HAS BEEN PROGRAMMED WITH BBC SW VERSION 05.12 PLEASE REMOVE PROGRAMMING PIN AND POWER CYCLE TO START SYSTEM</p>

8. Turn off power to the 3M™ Wireless Communication System Model XT-1 Base Station.
9. Unfasten the programming pin (CON30). (*See Fig. 4.1*).
10. Turn on power to the 3M™ Wireless Communication System Model XT-1 Base Station. The system will now progress through the system checks.
 - a. If a DSP update is required, the front panel display of the 3M™ Wireless Communication System Model XT-1 Base Station will indicate an update is in progress, providing a % completed on the display. This update takes from 15-20 minutes to complete.

```

REMOTE UPDATE IN PROGRESS
█.....05.12..... 05%
IBU GREETER DSP CODEC RTC TIMER
PASS PASS BOOT ---- ---- ----

```

b. If no DSP update is required, the 3M Wireless Communication System Model XT-1 Base Station is ready to configure.

```

08:35 TUE,AUG/16/2011 █ Mode> AL/MLT <
Noise Reduction [MED] █ Single Lane
Greeter Is Off Line! █ Volume < DAY >


```

11. Perform a Factory Setup (Menu Item 15) to restore all factory settings.
12. Select **Done** on the **Softupts** window or repeat the process for each additional 3M™ Wireless Communication System Model XT-1 Base Station.

3M Service phone numbers

In the United States	In Canada	In other countries
1-800-328-0033	651-575-5753	651-575-5753

Before you call...
Please get the Base Station Serial Number, and the Computer Operating System you are using.



Product Use: Many factors beyond 3M's control and uniquely within user's knowledge and control can affect the use and performance of a 3M product in a particular application. Given the variety of factors that can affect the use and performance of a 3M product, user is solely responsible for evaluating the 3M product and determining whether it is fit for a particular purpose and suitable for user's method of application. Warranty and Limited Remedy: 3M warrants that each 3M product will be free from defects in material and manufacture for 90 days from the date of purchase from 3M's authorized distributor. 3M MAKES NO OTHER EXPRESS OR IMPLIED WARRANTIES, INCLUDING ANY IMPLIED WARRANTY OF MERCHANTABILITY OR FITNESS FOR A PARTICULAR PURPOSE. If a 3M product does not conform to this warranty, the sole and exclusive remedy is, at 3M's option, replacement of the 3M product or refund of the purchase price. Limitation of Liability: Except where prohibited by law, 3M will not be liable for any loss or damage arising from the 3M product, whether direct, indirect, special, incidental or consequential, regardless of the legal theory asserted.



Building and Commercial Services Division
3M Center, Building 223-2N-21
St. Paul, MN 55144-1000
USA
1-800-328-0033
www.3M.com/XT1

3M is a trademarks of 3M.
Used under license in Canada.
© 3M 2012. All rights reserved.
90-0024-0081-1